

POISON
KEEP OUT OF REACH OF CHILDREN
READ SAFETY DIRECTIONS BEFORE OPENING OR USING
FOR ANIMAL TREATMENT ONLY

PASTORAL / AG™

TICKGARD™

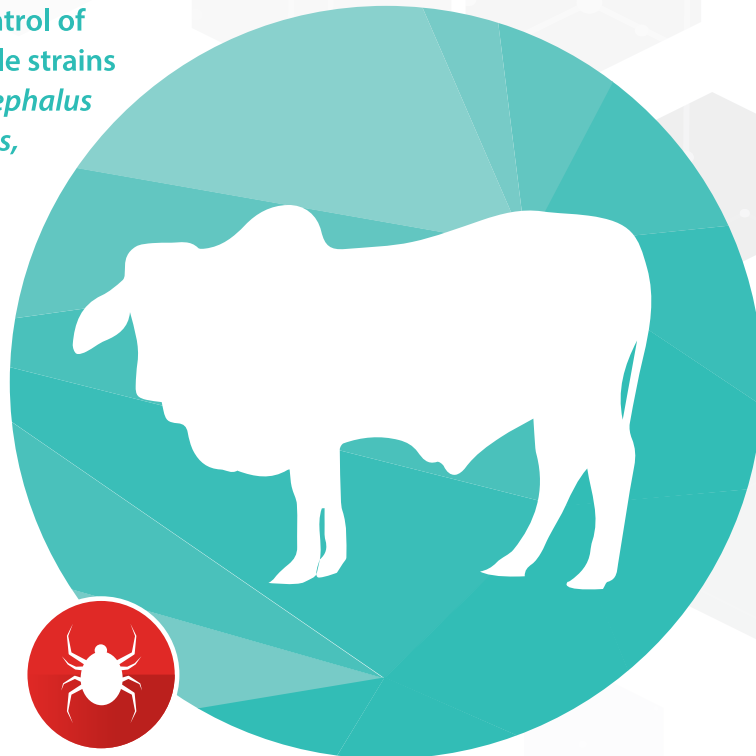
POUR-ON

FOR CATTLE

ACTIVE CONSTITUENT: 25 g/L FLUAZURON

**ALSO CONTAINS: 415 g/L 1-METHYL-2-PYRROLIDONE (solvent),
100 g/L 1-DODECYL-2-PYRROLIDONE (solvent), 100 g/L 1-OCTYL-2-PYRROLIDONE (solvent)**

For the strategic control of fluazuron-susceptible strains of cattle tick, *Rhipicephalus (Boophilus) microplus*, including strains resistant to organophosphates, synthetic pyrethroids and amidines, on beef cattle.



20 L

PASTORAL AG Tickgard Pour-On for Cattle contains fluzaron. It is effective against fluzaron-sensitive cattle ticks on beef cattle. Resistance may develop to any chemical.

DIRECTIONS FOR USE

Restrains:

DO NOT USE on cows which are producing or may in the future produce milk that may be used or processed for human consumption.

Re-treatment interval: DO NOT re-treat animals for 6 weeks after last treatment.

Contraindications:

This product is contraindicated for use in pregnant cows before six weeks of calving to avoid handling stress.

Dosage and Administration:

Apply in two bands about 7 cm wide on each side of the spine between the rump and the shoulders with a suitable applicator.

Retreat when you first see ticks but not before at least 6 weeks after the previous treatment.

Maximum number of treatments per annual tick season: 3.

Animals & Pest	States	Bodyweight (kg)	Dose (mL)
Beef cattle after weaning <i>[Rhipicephalus (Boophilus) microplus]</i>	QLD, NT, WA & NSW only	101 – 150	9
		151 – 200	12
		201 – 250	15
		251 – 300	18
		301 – 350	21
		351 – 400	24
		401 – 450	27
		451 – 500	30
		501 – 550	33
		551 – 600	36
		601 – 650	39
Apply 3 mL for each 50 kg above 650 kg.			

Cattle heavier than 650 kg should be dosed at 3 mL per 50 kg. A representative sample of animals should be weighed before treatment either with scales or a weighband. Dose rate to be based on heaviest cattle in each group (bulls, cows, steers, calves, etc.). Do not underdose. Where there is a large variation in size within the group, draft into two or more lines based on body weight, to avoid excessive overdosing.

There is no need to treat calves so long they suckle treated cows. Calves will receive adequate protection from their mother. A reduced length of protection may occur in cows which are suckling cows.

General Directions:

NOT TO BE USED FOR ANY PURPOSE, OR IN ANY MANNER, CONTRARY TO THIS LABEL UNLESS AUTHORISED UNDER APPROPRIATE LEGISLATION.

PASTORAL AG Tickgard Pour-On is a Tick Development Inhibitor and kills ticks progressively. It can take 2 to 3 weeks for cattle to be visibly free of ticks. No additional treatment is necessary during that time, even on heavily infested animals. The development inhibiting effect of PASTORAL AG Tickgard Pour-On commences within 3 days of treatment.

For local tick control recommendations contact your local Department of Agriculture.

Tick-infested cattle introduced onto properties where a PASTORAL AG Tickgard Pour-On treatment regime is in place should be treated with PASTORAL AG Tickgard Pour-On prior to release.

PASTORAL AG Tickgard Pour-On is not suitable for cleaning cattle moving into "gazetted" cattle tick free areas.

PASTORAL AG Tickgard Pour-On should not be applied to show cattle as a light scurfiness may be visible for some time after treatment.

Cleaning Instructions:

After use wash applicator with detergent and hot water. Dispose of rinsates in a disposal pit away from desirable plants and their roots and watercourses.

WITHHOLDING PERIODS

MEAT: DO NOT USE less than 42 days before slaughter for human consumption. Calves that have suckled on treated cows must not be slaughtered less than 4 months since the last treatment of the cows.

MILK: DO NOT USE on cows which are producing or may in the future produce milk that may be used or processed for human consumption.

TRADE ADVICE - EXPORT SLAUGHTER INTERVAL (ESI)

DO NOT USE less than 42 days before slaughter for export. Before using this product, confirm the current ESI from the distributor on (03) 5820 8444 or the APVMA website (www.apvma.gov.au/residues).

SAFETY DIRECTIONS

Harmful if swallowed. Will damage eyes and skin. Avoid contact with eyes and skin. Repeated exposure may cause allergic disorders. When opening the container and using the product, wear cotton overalls buttoned to the neck and wrist and a washable hat, elbow-length PVC gloves and face shield. If clothing becomes contaminated with product remove clothing immediately. If product on skin, immediately wash area with soap and water. If product in eyes, wash it out immediately with water. After use and before eating, drinking or smoking, wash hands, arms and face thoroughly with soap and water. After each day's use, wash gloves, face shield and contaminated clothing.

FIRST AID

If poisoning occurs, contact a doctor or Poisons Information Centre. Phone Australia 13 11 26. If swallowed, DO NOT induce vomiting. If in eyes, wash out immediately with water. Hold eyes open, flood with water for at least 15 minutes and see a doctor.

ADDITIONAL USER SAFETY INFORMATION

Handling of Treated Animals: Wear protective clothing recommended under Safety Directions, if handling treated animals within 24 hours of application. Additional information is listed in the safety data sheet.

ENVIRONMENTAL PROTECTION

Do not contaminate dams, rivers, streams or other waterways with the chemical or used container. The product is very toxic to aquatic invertebrates.

DISPOSAL

Triple-rinse container and dispose of rinsate in compliance with relevant local, state or territory government regulations. Do not dispose of undiluted chemicals on-site. If the container has the drumMUSTER logo visible, and has been thoroughly cleaned and dried, and is free of any visible residues, it can be recycled at any drumMUSTER collection or similar container management program site. The cap should not be replaced, but may be recycled separately with the container. If not recycling, break, crush, or puncture container and deliver to an approved waste management facility. If an approved waste management facility is not available, bury the broken, crushed or punctured containers 500 mm below the surface in a disposal pit specifically marked and set up for this purpose clear of waterways, vegetation and tree roots, in compliance with relevant local, state or territory government regulations. Do not burn empty containers or product.

STORAGE

Store below 30°C (room temperature). Store in original container tightly closed in a dry, cool place. Store out of direct sunlight.

B:

EXP:



**Combustible liquid.
Causes skin irritation.
Causes serious eye damage.
May cause respiratory irritation.
May damage fertility or the unborn child.
Avoid breathing fumes, mists, vapours or spray.
Use only outdoors or in a well-ventilated area.
IF INHALED: Remove victim to fresh air and keep at rest in a position comfortable for breathing.
Store locked up.**



297568-3